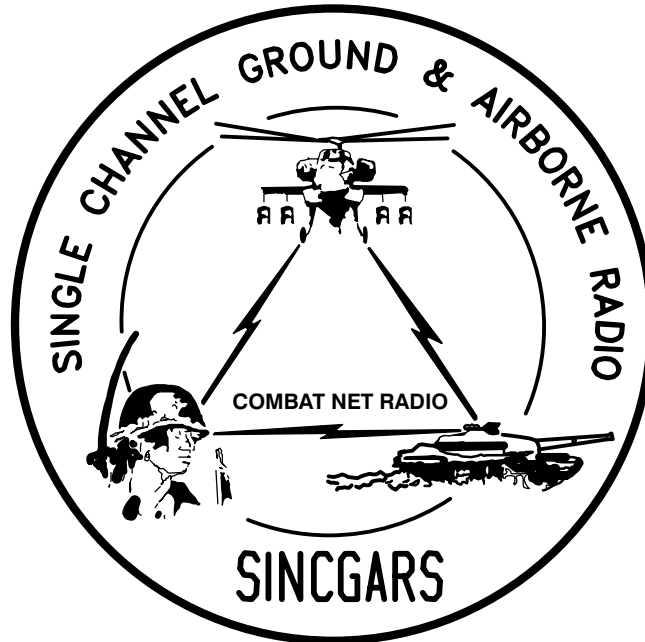


TECHNICAL BULLETIN



**INSTALLATION INSTRUCTIONS FOR
INSTALLATION KIT, ELECTRONIC EQUIPMENT
MK-2353/VRC (NSN 5895-01-274-5066) (EIC: N/A)
TO PERMIT INSTALLATION OF
RADIO SET AN/VRC-87/88/90 SERIES
IN A
BRIDGE, ARMORED-VEHICLE-LAUNCHED, M48/M60**

Approved for public release; distribution is unlimited.

DESTRUCTION NOTICE — Destroy by any method that will prevent disclosure of contents or reconstruction of the document.

HEADQUARTERS, DEPARTMENT OF THE ARMY

1 AUGUST 1999

**INSTALLATION INSTRUCTIONS FOR
 INSTALLATION KIT, ELECTRONIC EQUIPMENT
 MK-2353/VRC (NSN 5895-01-274-5066) (EIC: N/A)
 TO PERMIT INSTALLATION OF
 RADIO SET AN/VRC-87/88/90 SERIES
 IN A
 BRIDGE, ARMORED-VEHICLE-LAUNCHED, M48/M60**

REPORTING OF ERRORS AND RECOMMENDING IMPROVEMENTS

You can help improve this manual. If you find any mistakes, or if you know of a way to improve the procedures, please let us know. Mail your letter, DA Form 2028 (Recommended Changes to Publications and Blank Forms) or DA 2028-2 located in back of this manual direct to: Commander, US Army Communications-Electronics Command Fort Monmouth, ATTN: AMSEL-LC-LEO-D-CS-CFO, Fort Monmouth, New Jersey 07703-5000. The Fax number is 732-532-1413, DSN 992-1413. You may also e-mail your recommendation to AMSEL-LC-LEO-PUBS-CHG@cecom3.monmouth.army.mil.

In either case a reply will be furnished direct to you.

TABLE OF CONTENTS

Subject	Section	Page
Scope	0.1	1
General Information	0.2	1
Maintenance Forms, Records, and Reports	0.3	1
Reports of Maintenance and Unsatisfactory Equipment	0.3.1	1
Report of Packaging and Handling Deficiencies	0.3.2	1
Discrepancy in Transportation Deficiency Report (TDR) (SF 361)	0.3.3	1
Consolidated Index of Army Publications	0.4	1
Purpose of Installation	1.	2
End Item or System to be Modified	2.	2
Application Times	3.	2
Time for Completion of Installation	3.1	2
Time for Installation of One Assembly or Component	3.2	2
Preparation for Installation	4.	2
Preparation of Vehicle	4.1	2
Preparation of MK	4.2	2
MK, Distribution, and Consumables	4.3	3
Tools and Test, Measurement, and Diagnostic Equipment (TMDE) Required	4.4	6
Installation Procedures	5.	7
Installation of Mounting Base, Electrical Equipment MT-6352/VRC (mounting base)	5.1	9
Installation of Cables	5.2	11
Installation of Antenna AS-3916/VRC (antenna)	5.3	13
Installation of Antenna Base	5.3.1	13
Installation of Top Antenna Assembly	5.3.2	15
Post-Installation and Checkout	5.4	17
Appendix A. References		A1

*This manual supersedes TB 11-5820-890-20-39, dated 1 September 1993.

LIST OF ILLUSTRATIONS

Figure	Title	Page
4-1	MK Illustrated Parts List	5
5-1(1)	MK and Radio Installation: MK Equipment Locations	7
5-1(2)	MK and Radio Installation: Radio Equipment Locations	8
5-2	Mounting Base Installation	10
5-3	Cable Installation	12
5-4	Antenna Base Installation	13
5-5	Top Antenna Assembly Installation	15
5-6	Cable Diagram: For AN/VRC-87/88/90 Series	17

LIST OF TABLES

Number	Title	Page
4-1	Parts List for Installation of Radio Set AN/VRC-87/88/90 Series	4

0.1 SCOPE.

This technical bulletin provides Installation Instructions for Electronic Equipment MK–2353/VRC, commonly referred to as the Mounting Kit (MK). The MK shall be installed into the following type of vehicle(s):

- Bridge, Armored-Vehicle-Launched, M48
- Bridge, Armored-Vehicle-Launched, M60

The MK is used for installation of radio set components at field locations. The information contained in this technical bulletin is the official authorization to perform the installation at the unit maintenance level.

NOTES

- This technical bulletin is not an authorization for requisition or turn-in of vehicles.
- This technical bulletin does not establish quantity or types of vehicles assigned to using units.

This technical bulletin does not contain information on the maintenance or replacement of the MKs. This information is contained in the MAC of TM 11–5820–890–20–2 and RPSTL of TM 11–5820–890–20P.

0.2 GENERAL INFORMATION.

The MK becomes operable when all the radio set components are installed in the vehicle and correct power is supplied. Refer to TM 11–5820–890–20–1 or TM 11–5820–890–20–2 for installation, Operational (OP) Check instructions, and required maintenance procedures. Refer to TM 11–5820–890–20P for repair parts.

Included in the Radio Set AN/VRC–87/88/90 Series is:

- Radio Set AN/VRC–87/88/90 Series (for RT–1523(C)/U)

0.3 MAINTENANCE FORMS, RECORDS, AND REPORTS.

0.3.1 Reports of Maintenance and Unsatisfactory Equipment. See section 4.2.2.3 for information.

0.3.2 Report of Packaging and Handling Deficiencies. See section 4.2.2.1 for information.

0.3.3 Discrepancy in Transportation Deficiency Report (TDR) (SF361). See section 4.2.2.2 for information.

0.4 CONSOLIDATED INDEX OF ARMY PUBLICATIONS.

Refer to the latest issue of DA Pam 25–30 to determine whether there are new changes, or additional publications pertaining to the equipment.

1. PURPOSE OF INSTALLATION.

The Electronic Equipment MK–2353/VRC (MK) contains the items needed to mount Radio Set AN/VRC–87/88/90 series in a Bridge, Armored-Vehicle-Launched, M48/M60 (vehicle).

2. END ITEM OR SYSTEM TO BE MODIFIED.

Not applicable.

3. APPLICATION TIMES.

3.1 Time for Completion of Installation. Using two people, a total of 3.0 work hours is required. Typical vehicle downtime is 3.5 hours.

3.2 Time for Installation of One Assembly or Component. The following table lists the time required to install one component. All times have been rounded off to the nearest half hour. The sum of these times will not reflect the typical vehicle downtime.

ITEM	SECTION	TIME
Mounting Base, Electrical Equipment MT–6352/VRC	5.1	1.5
Cables	5.2	1.0
Antenna AS–3916/VRC	5.3	1.0

4. PREPARATION FOR INSTALLATION.

This section explains how to prepare the vehicle and MK for installation.

4.1 Preparation of Vehicle. To prepare the vehicle for installation, insure that the site includes adequate lighting and a power source when drilling is required. Inspect the vehicle for damage that could affect installation. Have any such damage repaired before installing MK.

4.1.1 Items to be Removed. Remove existing AN/VRC–12 radio family installation kit/harness. See TM 11–5820–401–20–2 for removing items used with intercom systems, or TM 11–5820–401–20–1 (used without intercom systems), and TM 9–2320–280–20.

4.1.2 List of Items to be Retained. Not applicable.

4.2 Preparation of MK. To prepare MK, unpack, inspect and check inventory.

4.2.1 Precautions During Handling. Observe these steps to prevent equipment damage.

- a. Keep dust covers in place on connectors.
- b. Do not disassemble or modify parts in MK unless authorized to do so.
- c. Keep mounting hardware covered and protected until needed.
- d. When exposed to moisture, rain or salt water, keep all parts dry to prevent corrosion.

4.2.2 Unpack and Inspect Equipment.

4.2.2.1 Inspect Packaging for Evidence of Damage. Any shipping damage should be reported on SF364 Report of Discrepancy (ROD) as prescribed in AR 735–11–2/DLAR 4140.55/NAVMATINST 4355.73A/AFR 400–64/MCO 4430.3F.

4.2.2.2 Unpack and Inventory MK. If any item is missing, fill out and forward Transportation Deficiency Report (TDR) (SF361) as described in AR 55–38/NAVSUPINST 4610.33C/AFR 75–18/MCO P4610.19D/DLAR 4500.15.

4.2.2.3 Examine Each Item for Damage. If any item is damaged, fill out and forward SF364 Report of Discrepancy (ROD) as prescribed in AR 735–11–2/DLAR 4140.55/NAVMATINST 4355.73A/AFR 400–64/MCO 4430.3F. All damages should be reported as prescribed by DA Pam 738–750, as contained in Maintenance Management Update.

4.3 MK, Distribution, and Consumables.

4.3.1 Items Supplied in MK and/or Required for Installation. Use Table 4–1 and figure 4–1 to identify and inventory MK parts supplied to install Radio Set AN/VRC–87/88/90 Series.

4.3.2 Distribution and Issue Instructions.

- a. US Forces: Do not requisition MK. They will be shipped automatically.
- b. US Army Depots: Requisition MK through supply channels.
- c. Multiservice: Instructions shall be included for multiservice modifications.
- d. MAP/MAS Countries: Instructions shall be provided for MAP/MAS countries.

Table 4-1. Parts List for Installation of Radio Set AN/VRC-87/88/90 Series

NSN	ITEM DESCRIPTION AND PART NUMBER	QUANTITY IN MK	SMR CODE	FIGURE, ITEM NO.
5985-01-353-4943	Antenna, Vehicular, AS-3916/VRC (A3207487-1)	1	PAOOF A	4-1, 2
5305-00-847-1159	Screw, Cap, Hexagon (3/8-16 x 1 3/4 in) MS35307-365	4	PAOZZA	
5310-00-913-8881	Nut, Hexagon (3/8-16 in) MS51971-3	4	PAOZZA	4-1, 1
5310-00-061-1258	Washer, Lock, Internal/External-Toothed (3/8 in) MS45904-76	8	PAOZZA	
5310-00-889-2527	Washer, Lock, Internal/External-Toothed (5/16 in) MS45904-72 (Not Used)	2	PAOZZA	4-1, 3
5306-00-225-9086	Bolt, Machine (5/16-24 x 5/8 in) MS90726-31 (Not Used)	1	PAOZZA	
5330-01-205-2864	Gasket (A3013655-1) (Not Used)	1	PAOZZA	4-1, 4
4010-01-381-1521	Wire Rope Assembly (A3207523-1)	1	PAOZZA	
5975-01-188-8873	Mounting Base, Electrical Equipment MT-6352/VRC (A3013367-1)	1	PAOOF A	4-1, 5
5306-00-225-9089	Bolt, Machine (5/16-24 x 1 in) MS90726-34	5	PAOZZA	
5310-00-889-2527	Washer, Lock, Internal/External-Toothed (5/16 in) MS45904-72	10	PAOZZA	4-1, 6
5310-00-880-7746	Nut, Hexagon (5/16 - 24 in) MS51968-5	5	PAOZZA	
5995-01-225-0503	Cable Assembly, Power, Electrical CX-13306/VRC (5 FT, 0 IN) (A3014043-6)	1	PAOZZA	4-1, 3
5995-01-219-7031	Cable Assembly, Radio Frequency CG-3855/VRC (9 FT, 0 IN) (A3014031-4)	1	PAOZZA	
5995-01-219-4932	Cable Assembly, Special Purpose, Electrical CX-13300/VRC (5 FT, 0 IN) (A3014044-3)	1	PAOZZA	4-1, 4
5995-01-303-4951	Cable Assembly, Special Purpose, Electrical CX-13313/VRC (2 FT, 7 IN) (A3018360-1)	1	PAOZZA	
5340-00-809-1490	Clamp, Loop (1/4-1/4 in) MS21333-98	1	PAOZZA	4-1, 5
5305-00-068-0501	Screw, Cap, Hexagon (1/4-20 x 5/8 in) MS90725-5	1	PAOZZA	
5975-00-111-3208	Strap, Tiedown, Electrical Components MS3367-5-9	10	PAOZZA	4-1, 6
5310-00-582-5965	Washer, Lock (1/4 in) MS35338-44	1	PAOZZA	

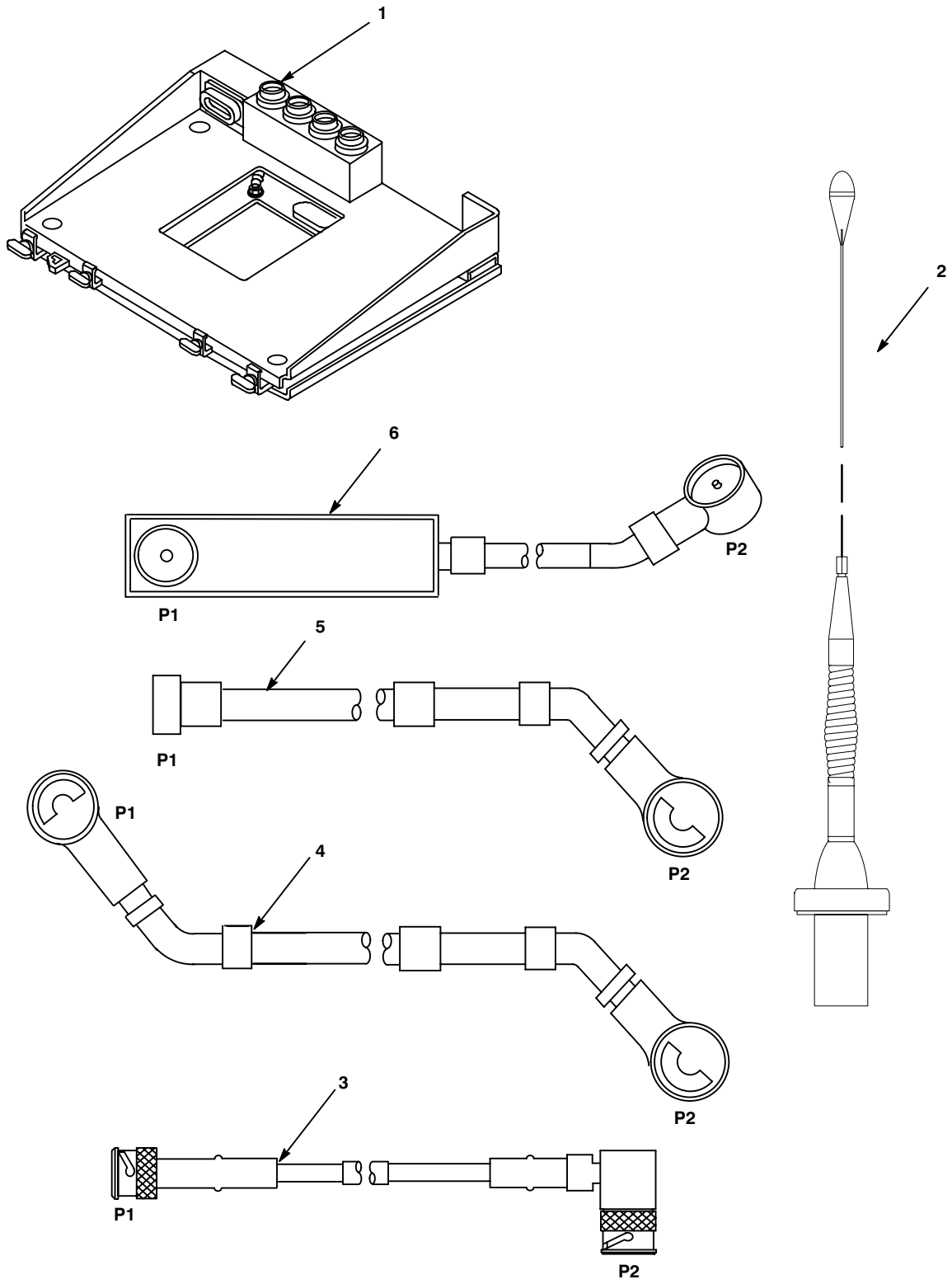


Figure 4-1. MK Illustrated Parts List

4.3.3 Consumable Materials. The table below lists materials required for installation but not supplied with MK.

NSN	NOMENCLATURE
8040-00-117-8510	Adhesive-Sealant, Clear, RTV
6850-00-880-7616	Silicone Compound, MIL-S-8660
8030-00-292-1102	Conductive Anti-seize Compound

4.4 Tools and Test, Measurement, and Diagnostic Equipment (TMDE) Required. The following tools and TMDE are needed for installation.

NOMENCLATURE	NSN	QUANTITY
Radio Set*		1
Electric Grinder or Equivalent		1
Pocket Knife, Electrician's	5110-00-240-5943	1
Screwdriver, No. 2 Point Phillips, 4 in	5120-00-234-8913	1
Screwdriver, 1/4 in Flatblade, 4 in	5120-00-222-8852	1
Pliers, Round Nose	5120-00-240-6172	1
Pliers, Diagonal Cutting	5110-00-965-0974	1
Wrench, Open/Box: 7/16 in	5120-00-228-9505	1
1/2 in	5120-00-228-9506	1
9/16 in	5120-00-228-9507	1
Handle, Socket Wrench	5120-00-240-5364	1
Socket: 7/16 in	5120-00-227-6703	1
1/2 in	5120-00-237-0977	1
9/16 in	5120-00-227-6704	1
Electric Drill	5130-00-889-8994	1
Drill Bits: 11/32 in	5133-00-227-9664	1
13/32 in	5133-00-227-9668	1

* Use radio issued with your vehicle if available.

5. INSTALLATION PROCEDURES.

This section describes where and how to install MK items in the vehicle. See figure 5-1 for an overall view of where vehicular MK equipment, as well as radio components, typically will be installed. When installing MK equipment, be sure to read and follow instructions and illustrations carefully.

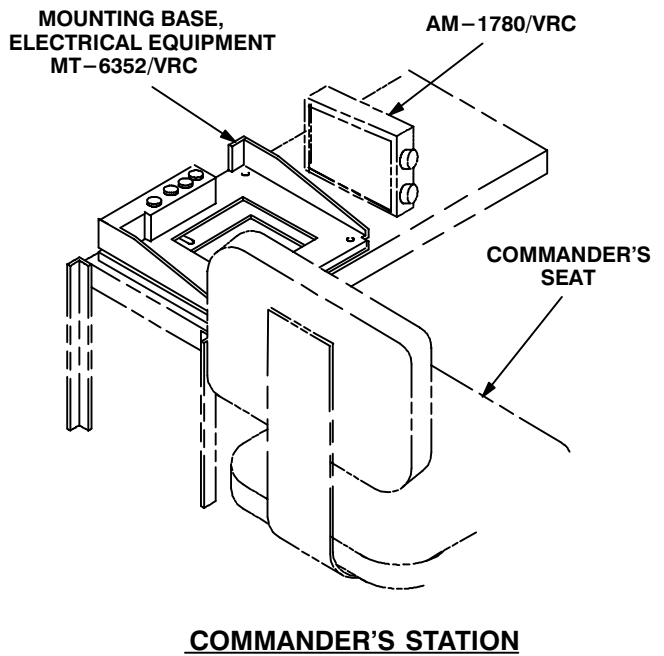
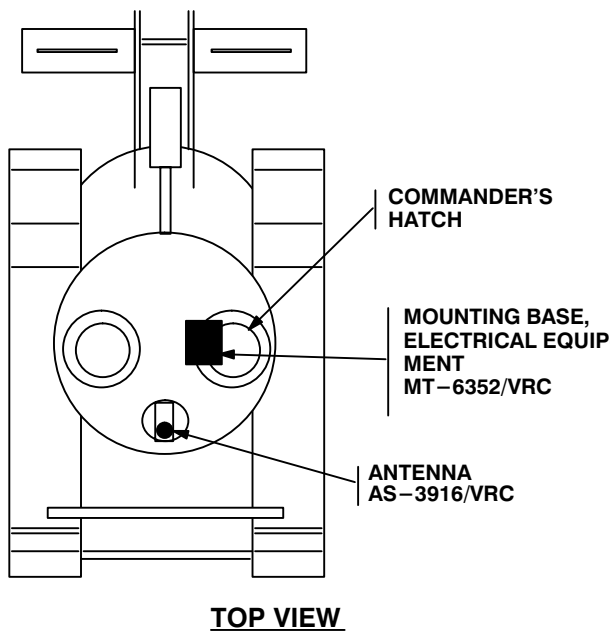
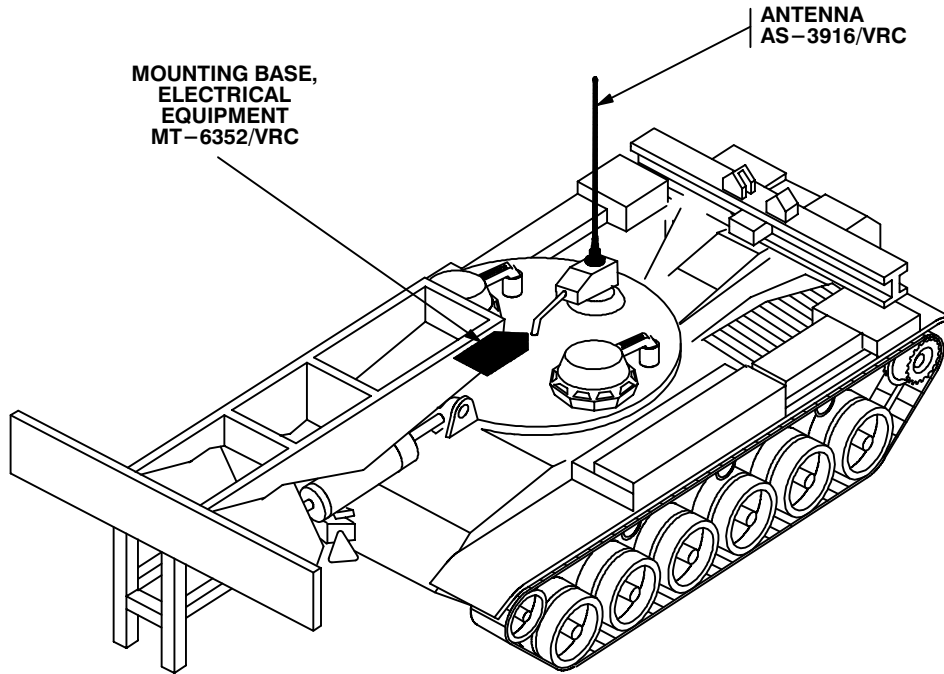


Figure 5-1 (1). MK and Radio Installation: MK Equipment Locations

5. INSTALLATION PROCEDURES. Continued.

INSTALLATION
FOR
AN/VRC-87/88/90 Series

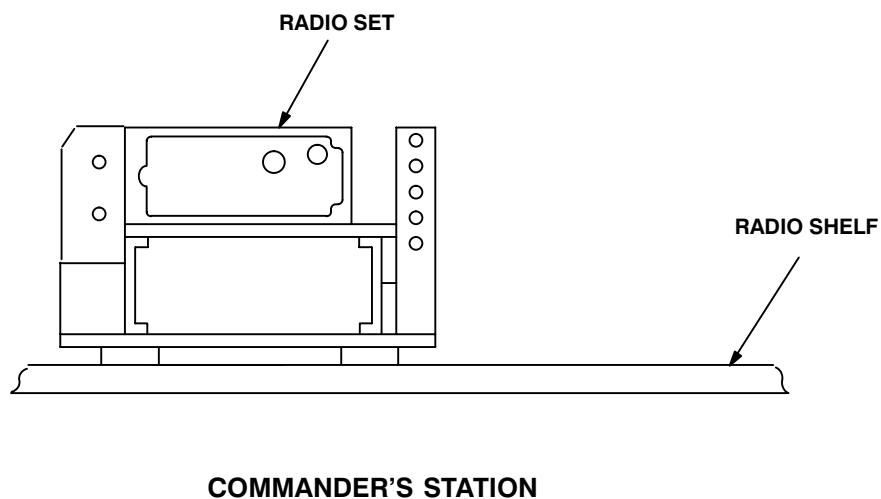


Figure 5-1 (2). MK and Radio Installation: Radio Equipment Locations

5.1 Installation of Mounting Base, Electrical Equipment MT–6352/VRC (mounting base). Remove and retain attaching bag of 5/16 in mounting hardware for installation. To insure good electrical grounding, any rust, corrosion or paint around mounting holes in radio shelf should be removed before installing the mounting base. See figure 5–1 (1) for location; then see Figure 5–2 and perform the following steps.

ITEM	ACTION	REMARKS
NOTE		
Apply a thin coat of adhesive–sealant to both sides of each internal/external–toothed (IET) washer during installation, and to the area of contact where IET washer is to be placed.		
a. Mounting base (1) and existing radio shelf.	Remove a 2” square area of paint on the underside of the mounting base (1) around left front and rear mounting holes. Remove a 2” square area of paint on the existing radio shelf around the existing mounting holes that mate with left front and rear mounting holes of mounting base (1). Clean the paint removed areas and apply a thin coat of CASC.	Tools: Electric grinder or equivalent.
b. Mounting base (1).	Place on existing radio shelf over existing holes. See Figure 5–2.	
c. Two outer thumbscrews	Turn ccw until both sets of threads have cleared center of holes.	
d. Mounting base (1).	Align four holes and rear slot with matching hole pattern in equipment shelf.	
e. Five machine bolts (6) ten internal/external–toothed. (IET) washers (3) and five nuts (2)	Install and secure to mounting base (1) and shelf.	Tools: 1/2 in socket and 1/2 in open/box wrench.
f. Two outer thumbscrews (4).	Tighten and secure to rim clenching clamps (5) and mounting base.	

5.1 Installation of Mounting Base, Electrical Equipment MT-6352/VRC (mounting base). Continued.

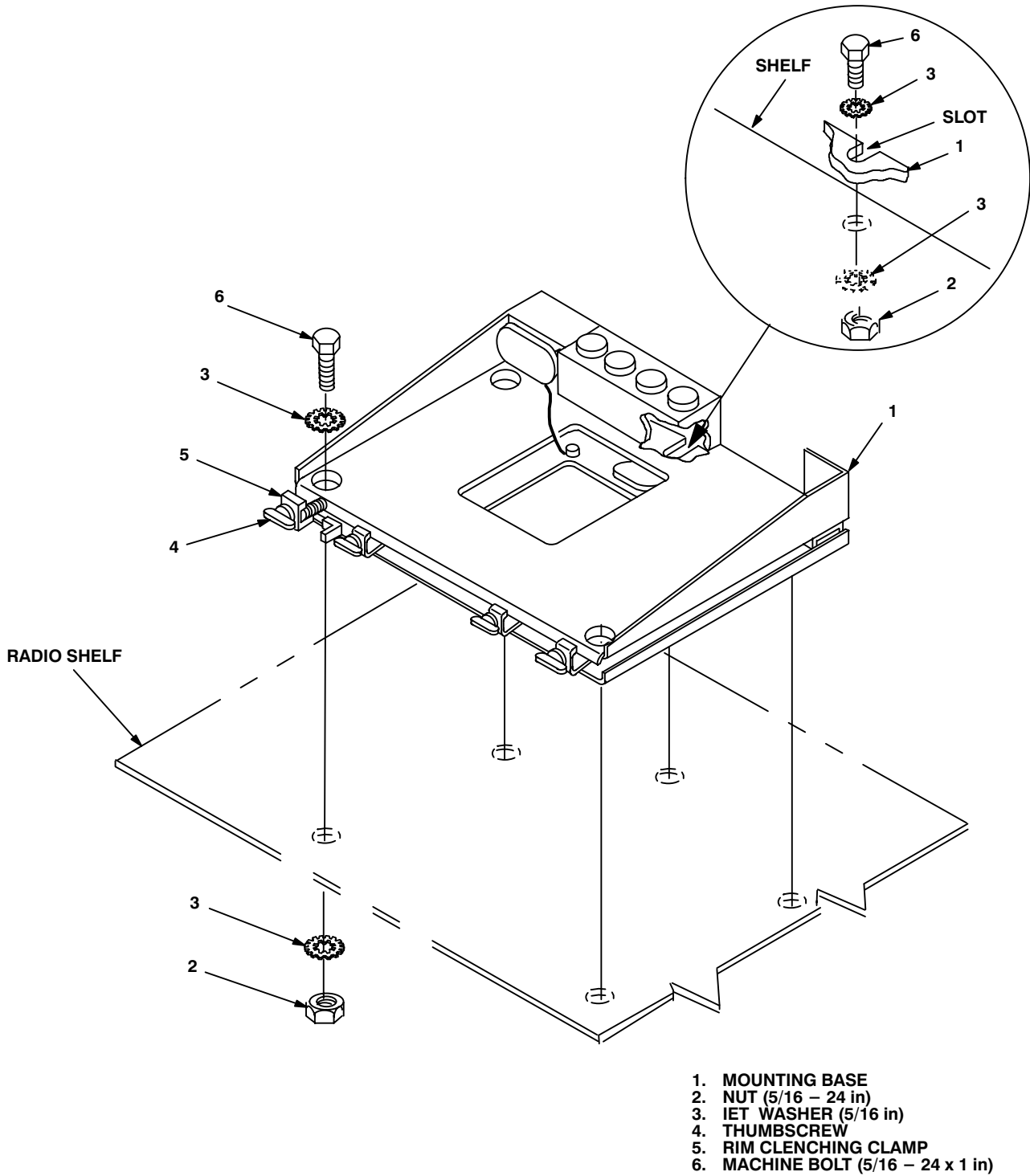


Figure 5-2. Mounting Base Installation

5.2 Installation of Cables. To accomplish the installation, leave loop clamps and tiedown straps loose enough to adjust cable slack and allow easy adjustment of equipment. When installation is complete, tighten and secure clamps and tiedown straps.

WARNING

Make sure vehicle power source is positioned OFF or disconnected before installing cables.

ITEM	ACTION	REMARKS
a. Existing mounting bracket and mounting hardware.	Remove and retain. See figure 5–3.	
b. RF cable (1).	From rear hull roof, insert connector P2 in cable guard; then push cable through guard to hull interior. See figure 5–3.	
c. RF cable (1) connector P2.	Pull down from cable guard hole in ceiling and position on top of mounting base (2).	
d. Loop clamp (6), cap screw (1/4–20 x 5/8 in) and lock washer (1/4 in).	Wrap clamp around RF cable (1); then install to existing boss on ceiling behind commander's seat. See figure 5–3 for location.	Tools: 7/16 in wrench.
e. Tiedown strap (5).	Wrap around RF cable (1) and secure to left front leg of radio shelf.	
f. SP cable (3) connector P1.	Connect and secure to AM–1780/VRC connector J501.	
g. SP cable (3) connector P2.	Connect and secure to SP cable (7) connector P1. See figure 5–3, detail A.	
h. SP cable (7) connector P3.	Connect and secure to mounting base (2) connector J3.	
i. Power cable (4) connector P1.	Connect and secure to power junction box connector below radio shelf. See figure 5–3.	
j. Power cable (4).	Route along existing cable harness (below rear edge of radio shelf) to rear of mounting base (2). See figure 5–3.	
k. Power cable (4) connector P2.	Connect and secure to mounting base (2) connector J1.	
l. Tiedown strap (5).	Wrap around power cable (4) and secure to existing cable harness. See figure 5–3 for location.	

5.2 Installation of Cables. Continued

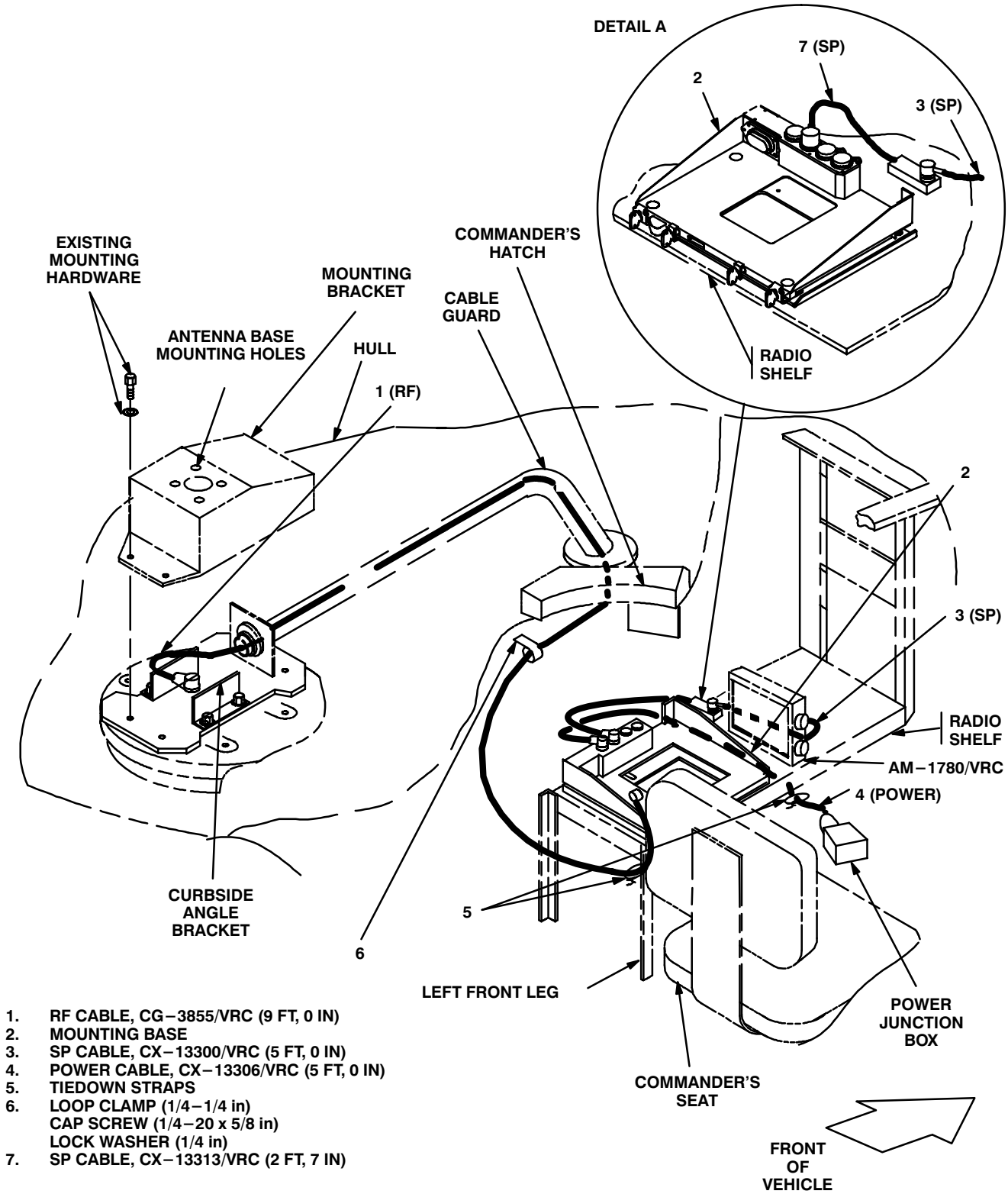


Figure 5-3. Cable Installation: Hull Roof and Interior

5.3 Installation of Antenna, Vehicular, AS-3916/VRC (antenna).

5.3.1 Installation of Antenna Base. Use the following procedures to install antenna base. See Figure 5-1 (1) for location. Remove ground strap from antenna base(s).

ITEM	ACTION	REMARKS
------	--------	---------

NOTE

Apply a thin coat of adhesive-sealant to both sides of each internal/external-toothed (IET) washer during installation, and to the area of contact where IET washer is to be placed.

a. Existing mounting bracket (removed in section 5.2, step a).	Enlarge four antenna base mounting holes to 13/32 in diameter. See figure 5-3.	Tools: Electric drill and 13/32 in drill bit.
--	--	---

1. CAP SCREW (3/8-16 x 1 3/4 in)
2. IET WASHER (3/8 in)
3. NUT (3/8-16 in)
4. RF CABLE, CG-3855/VRC (9 FT, 0 IN)
5. ANTENNA BASE

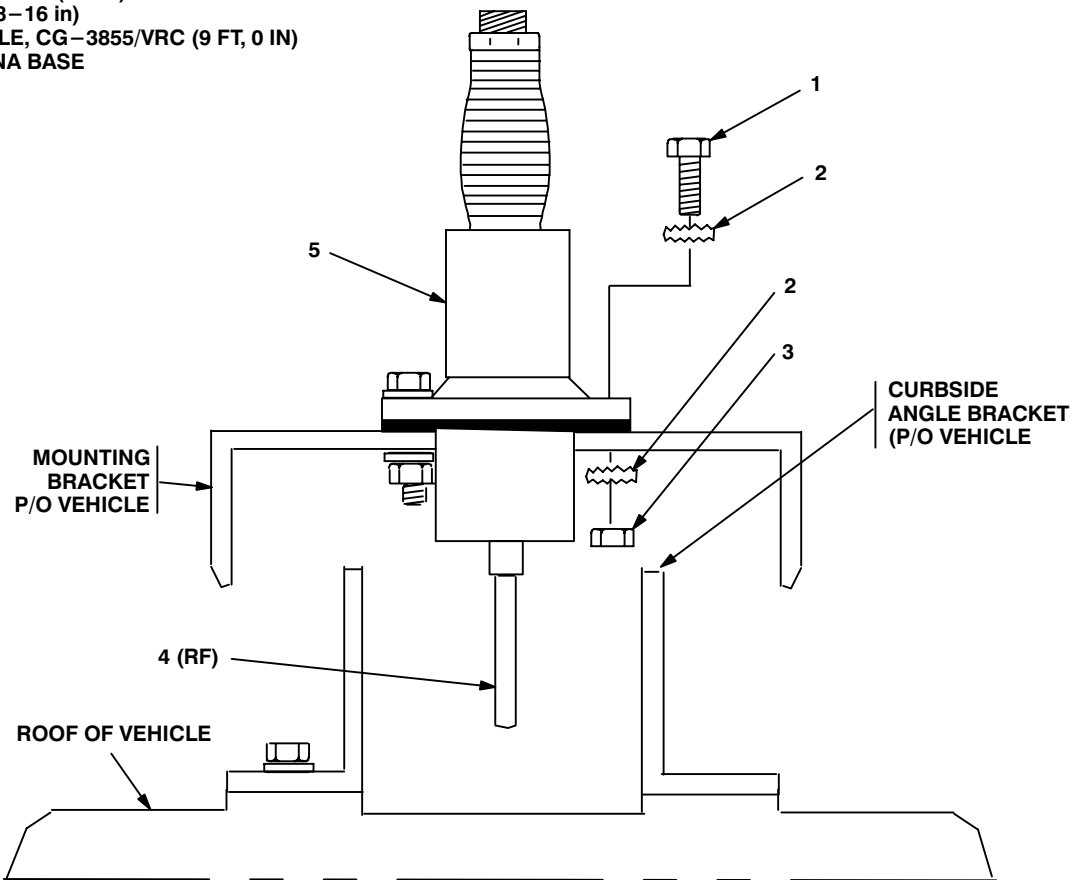


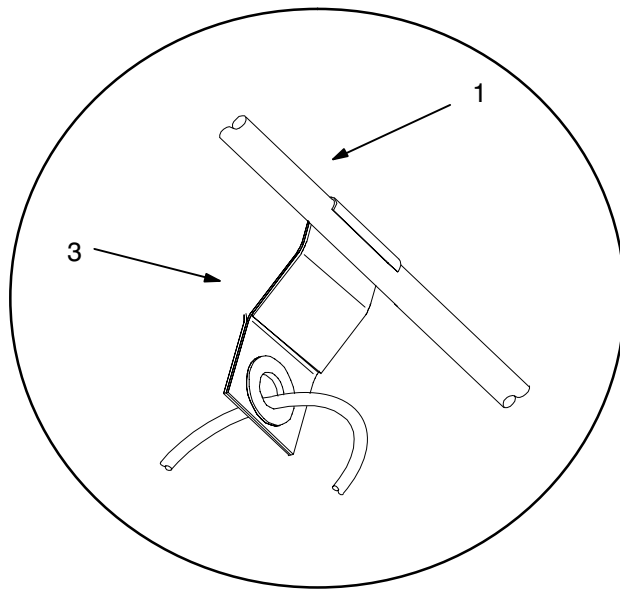
Figure 5-4. Antenna Base Installation: Rear View

5.3.1 Installation of Antenna Base. Continued

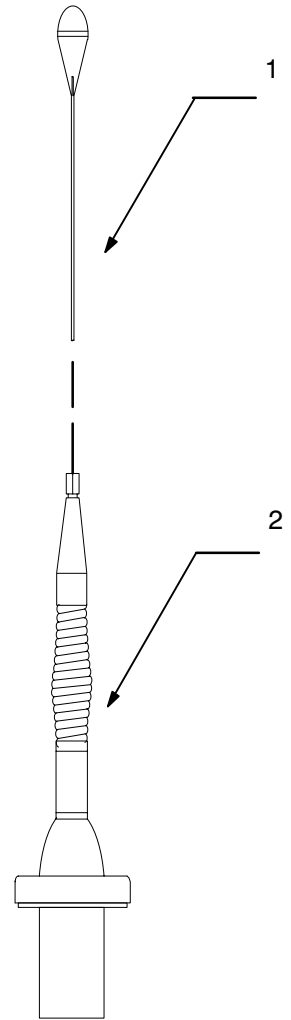
ITEM	ACTION	REMARKS
b. Existing mounting bracket.	Remove the paint (1" strip) for 360° centered around four mounting holes. Clean the paint removed area and apply a thin coat of conductive anti-seize compound (CASC).	Tools: Electric grinder or equivalent.
c. Antenna base (5).	Place on top of existing mounting bracket; then align mounting holes.	
d. Four cap screws (1), eight IET washers (2) and four nuts (3).	Install and tighten.	Tools: 9/16 in socket and 9/16 in open/box wrench.
e. RF cable (4) connector P1.	Connect and secure to antenna base (5) connector J1.	
f. Antenna base (5) and	Apply a bead of adhesive-sealant/silicon compound 360° around the seam between antenna base (5) and mounting bracket.	
g. Existing mounting bracket and mounting hardware.	Reinstall. See Figure 5-3.	

5.3.2 Installation of Top Antenna Assembly. The top portion of the antenna includes a lower element and an upper element (with installed cap). Use the following procedure to assemble, install and tie down all antennas.

ITEM	ACTION	REMARKS
a. Antenna elements (1).	Install and secure to antenna base (2).	
b. Wire rope assembly (3).	Attach clip to antenna element (1). Tie rope to vehicle to position antenna in desired location. See Figure 5-5, Detail A.	



DETAIL A



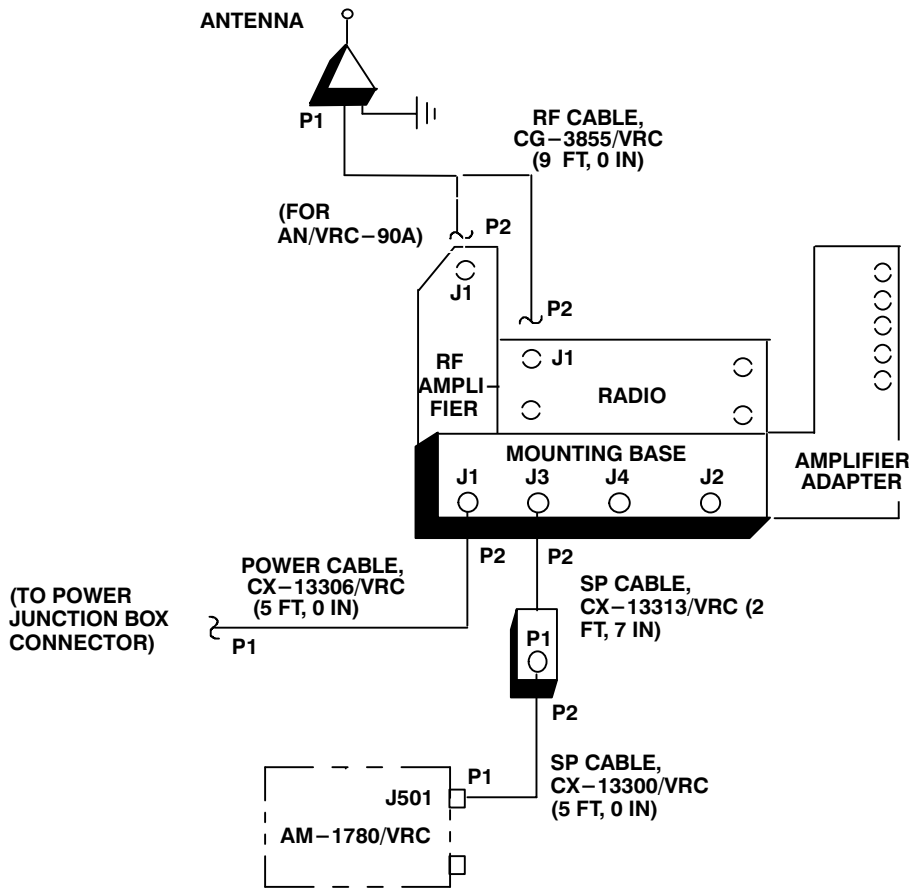
- 1. ANTENNA ELEMENT
- 2. ANTENNA BASE
- 3. WIRE ROPE ASSEMBLY

Figure 5-5. Top Antenna Assembly Installation

5.4 Post–Installation and Checkout. After equipment is installed and cables are connected, perform the following steps.

ITEM	ACTION	REMARKS
a. Equipment.	Check for secure mounting. Check for loose parts, connectors and mounting hardware.	
b. Cables.	Check for proper installation and connection of cables. See figure 5–7 for cable connections. Unused cables should be stowed in appropriate place inside the vehicle.	
c. Loop clamps.	Check that all have been properly installed and tightened.	
d. Protective covers.	Insure that all installed cables are covered when not in use or connected.	
e. Radio issued with vehicle.	Install and connect cables. See TM 11–5820–890–20–1 or TM 11–5820–890–20–2 for installation and Operational (OP) Check instructions.	
f. MK line replaceable units.	See TM 11–5820–890–20P for Repair Parts and Special Tools List (RPSTL) information.	

5.4 Post-Installation and Checkout. Continued



CABLE ASSEMBLY	FROM			TO		
	CABLE CONN.	UNIT	UNIT CONN.	CABLE CONN.	UNIT	UNIT CONN.
CX-13306/VRC (5 FT, 0 IN)	P2	Mounting base	J1	P1	Power Bendix connector	
CX-13300/VRC (5 FT, 0 IN)	P2	CX-13313/VRC (2 FT, 7 IN)	P1	P1	AM-1780/VRC	J501
CX-13313/VRC (2 FT, 7 IN)	P1	CX-13300/VRC (5 FT, 0 IN)	P2	P2	Mounting base	J3
CG-3855/VRC (9 FT, 0 IN)	P1	Antenna base	J1	P2	RF amplifier or radio	J1

Figure 5-6. Cable Diagram: For AN/VRC-87/88/90 Series

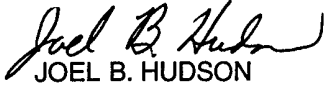
APPENDIX A

REFERENCES

AMDF	Army Master Data File (Microfiche)
AR 710-2	Supply Policy Below the Wholesale Level as Contained in Unit Supply UPDATE
AR 725-50	Requisitioning, Receipt and Issuing System in UPDATE
DA Pam 25-30	Consolidated Index of Army Publications (Microfiche)
DA Pam 710-2-1	Using Unit Supply System Manual Procedures as Contained in Unit Supply UPDATE
SB 11-131	Vehicular Radio Sets and Authorized Installations (SINCGARS)
TM 11-5820-890-10-1	Operator's Manual (ICOM Radio Sets)
TM 11-5820-890-10-3	Operator's Manual (Non-ICOM Radio Sets)
TM 11-5820-890-20-1	Unit Maintenance Manual (ICOM Radio Sets)
TM 11-5820-890-20-2	Unit Maintenance Manual (Non-ICOM Radio Sets)
TM 11-5820-890-20P	Repair Parts and Special Tools List

By Order of the Secretary of the Army:

Official:



JOEL B. HUDSON
*Administrative Assistant to the
Secretary of the Army*

9916715

ERIC K. SHINSEKI
General, United States Army
Chief of Staff

DISTRIBUTION:

To be distributed in accordance with the initial distribution number (IDN) 369540 requirements for TB 11-5820-890-20-39.

SOMETHING WRONG WITH THIS PUBLICATION



THEN ... JOT DOWN THE INFO ABOUT IT ON THIS FORM. CAREFULLY TEAR IT OUT. FOLD IT AND DROP IT IN THE MAIL.

FROM: (PRINT YOUR UNIT'S COMPLETE ADDRESS)
 Commander
 Stateside Army Depot
 ATTN: AMSTA-US
 Stateside, NJ 07703-5007

DATE SENT
 10 July 1995

PUBLICATION NUMBER TM 11-5840-340-12	PUBLICATION DATE 23 Jan 74	PUBLICATION TITLE Radar Set AN/PRC-76
--	--------------------------------------	---

BE EXACT PIN-POINT WHERE IT IS				IN THIS SPACE TELL WHAT IS WRONG AND WHAT SHOULD BE DONE ABOUT IT:
PAGE NO	PARA-GRAPH	FIGURE NO	TABLE NO	
2-25	2-28			<p>Recommend that the installation antenna alignment procedure be changed throughout to specify a 20 IFF antenna lag rather than 10</p> <p>REASON: Experience has shown that with only a 10 lag, the antenna servo system is too sensitive to gusting in excess of 25 knots, and has a tendency to rapidly accelerate and decelerate as it hunts, causing strain to the drive train. Hunting is minimized by adjusting the lag to 20 without degradation of operation.</p>
3-10	3-3		3-1	<p>Item 5, Functional column. Change <input type="checkbox"/> 2 dB" to <input type="checkbox"/> 3 dB".</p> <p>REASON: The adjustment procedure for the TRANS POWER FAULT indicator call for a 3 dB (500 watts) adjustment to light the TRANS POWER FAULT indicator.</p>
5-6	5-8			<p>Add new step f.1 to read, <input type="checkbox"/> Replace cover plate removed in step d above."</p> <p>REASON: To replace the cover plate.</p>
		FO-3		<p>ZONE C 3. On J1-2, change <input type="checkbox"/> +24 VDC" to <input type="checkbox"/> +5 VDC".</p> <p>REASON: This is the output line of the 5 VDC power supply. +24 VDC is the input voltage.</p>

SAMPLE

TEAR ALONG DOTTED LINE

PRINTED NAME, GRADE OR TITLE AND TELEPHONE NUMBER SSG I. M. DeSpirito 999-1779	SIGN HERE
--	---------------

SOMETHING WRONG WITH THIS PUBLICATION



THEN ... JOT DOWN THE INFO ABOUT IT ON THIS FORM. CAREFULLY TEAR IT OUT. FOLD IT AND DROP IT IN THE MAIL.

FROM: (PRINT YOUR UNIT'S COMPLETE ADDRESS)

DATE SENT

PUBLICATION NUMBER

PUBLICATION DATE

PUBLICATION TITLE

BE EXACT PIN-POINT WHERE IT IS

IN THIS SPACE TELL WHAT IS WRONG AND WHAT SHOULD BE DONE ABOUT IT:

PAGE NO	PARA-GRAPH	FIGURE NO	TABLE NO

TEAR ALONG DOTTED LINE

PRINTED NAME, GRADE OR TITLE AND TELEPHONE NUMBER

SIGN HERE

FILL IN YOUR
UNIT'S ADDRESS

FOLD BACK

DEPARTMENT OF THE ARMY



OFFICIAL BUSINESS

PLEASE
AFFIX
STAMP
POSTAGE
REQUIRED

TEAR ALONG DOTTED LINE

Commander
U.S. Army Communications-Electronics Command
and Fort Monmouth
ATTN: AMSEL-LC-LEO-D-CS-CFO
Fort Monmouth, New Jersey 07703-5000



FOLD BACK

